

Project Type Performance Reports Overview: Transitional Housing Nashville January 2016

The system performance measures considered in this report build upon HUD measures articulated in the HEARTH Act and *Opening Doors: The Federal Strategic Plan to Prevent and End Homelessness*. The measures align with HUD's approach and also fold in additional considerations, including cost effectiveness. These measures are important in understanding both individual project performance, and also system performance as a whole.

This report is designed to provide each program in the system with its own individual results, and also to place the results into a context by presenting a comparison to programs of the same type. The tables in this report present the performance for all transitional housing programs in Nashville. To preserve confidentiality of results for each provider, projects have been de-identified and assigned a consistent letter identifier for each measure. The goal is that each provider can understand their individual results in relation to other projects and to the system as a whole.

The data used to prepare these reports was collected from the Housing Inventory Count (HIC), Homeless Management Information System (HMIS), and budget information provided by each program. The data analyzed is for the period from July 1, 2013 to June 30, 2015.

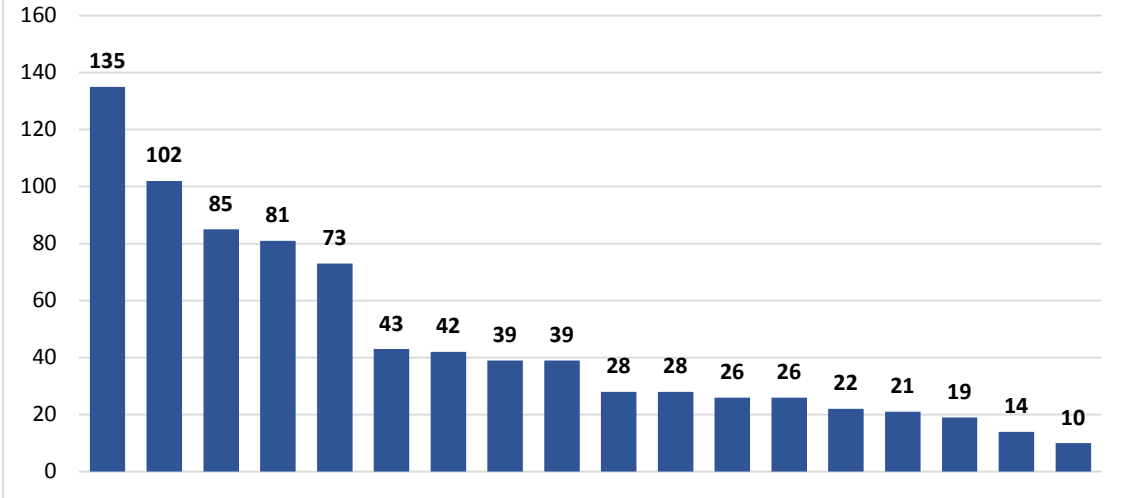
Below is an overview and explanation of each of the performance measures:

- **Utilization Rate** measures whether existing bed capacity is being maximized and can help identify programs with high barriers to entry. Maximizing the use of available bed capacity is essential to ensuring that system resources are being put to their best use and that as many homeless people are being served as possible in the existing inventory.
- **Length of Stay** measures how quickly programs are helping households exit homelessness and can be considered in relation to the rate of return to homelessness.
- **Rate of Return to Homelessness** measures whether people who exited the system to permanent housing return to a homeless program within 12 months. This measure identifies whether programs are helping people into housing placements that "stick". Assessing this measure can help alleviate concerns that serving higher needs clients and helping them exit to housing more quickly could result in housing placements that are not stable.
- **Household Entries from Homeless Prior Living** measures the effectiveness of program targeting in that programs should be focusing on serving people who are literally homeless: unsheltered or living in emergency shelters. The most effective use of system resources is prioritizing homeless households for beds while diverting those who are still housed. Successfully reducing homelessness depends on communities prioritizing those with the highest needs for available units, so this data allows communities to understand the degree to which each program is serving people with the most acute housing situations.
- **Household Entries from Non-Homeless Prior Living** considers the percentage of entries from housed locations, including institutions, family/friends, subsidized and unsubsidized housing, transitional housing and permanent supportive housing. Again, this measure is important in that it assesses the effectiveness of program targeting. Admitting households into homeless

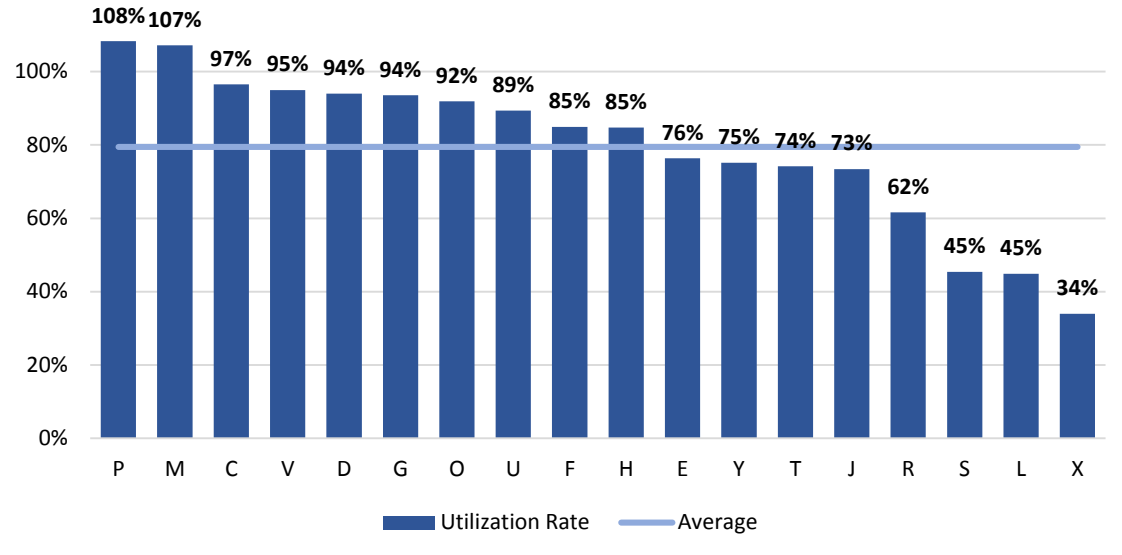
programs from housed situations is not the most effective use of resources. Instead, many of these people could be diverted from entering the homeless system with some assistance to remain in their current housing or move directly to alternative housing.

- **Rate of Exit to Permanent Housing** is a measure that allows programs to think about how best to increase the rate at which homeless people exit programs into housing. This is one of the most important ways a community can reduce homelessness.
- **Cost per Permanent Housing Exit** is a more performance-oriented way of measuring cost than the typical cost per unit or cost per household measure. It illustrates whether system resources are being invested in interventions that are effective in ending homelessness. This measure also helps identify system components or programs that are not cost effective. Cost per permanent housing exit is a key performance measure because it assesses not only whether a program is helping clients to move to permanent housing but also whether they do so in a cost effective manner. This data allows communities to understand whether scarce system resources are being spent in a way that achieves the maximum possible results.

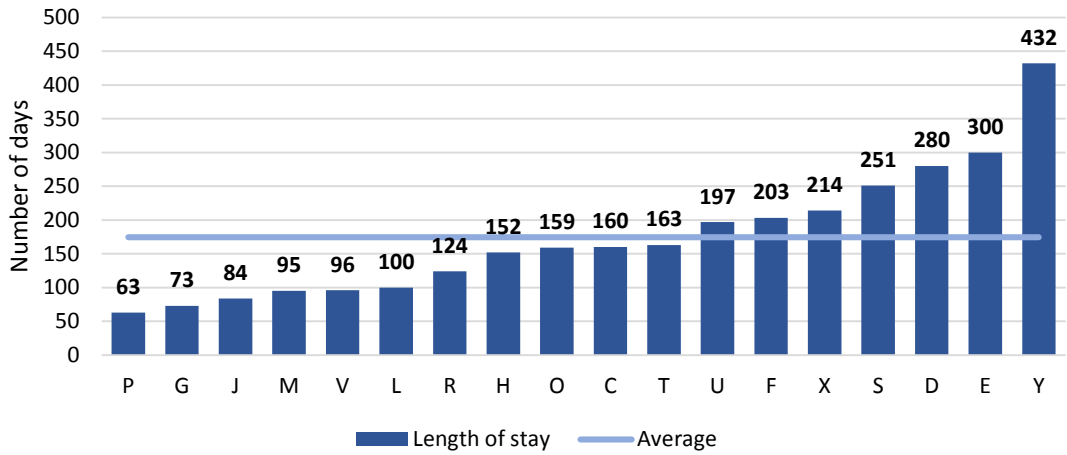
Nashville Transitional Housing: HMIS Households Served in Analysis Year
(July 2014 - June 2015)



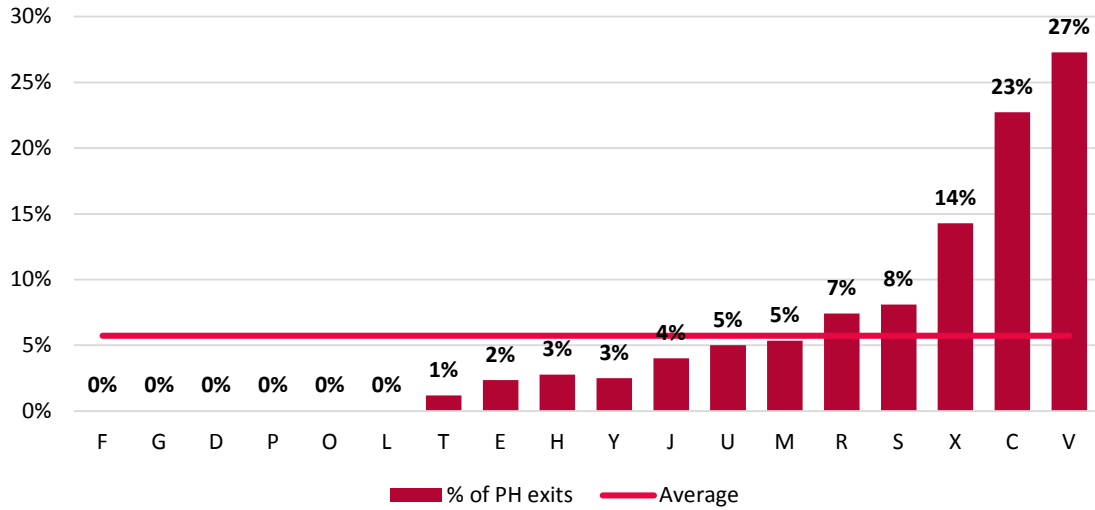
Nashville Transitional Housing: Utilization Rate in Analysis Year
(July 2014 - June 2015)



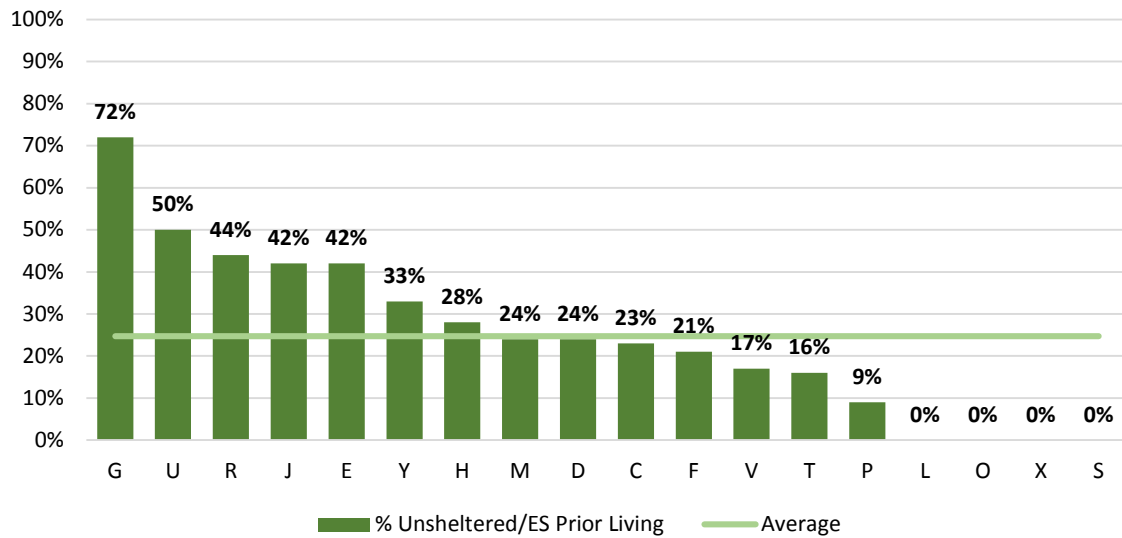
Nashville Transitional Housing: Average Length of Stay in Analysis Year
 (July 2014 - June 2015)



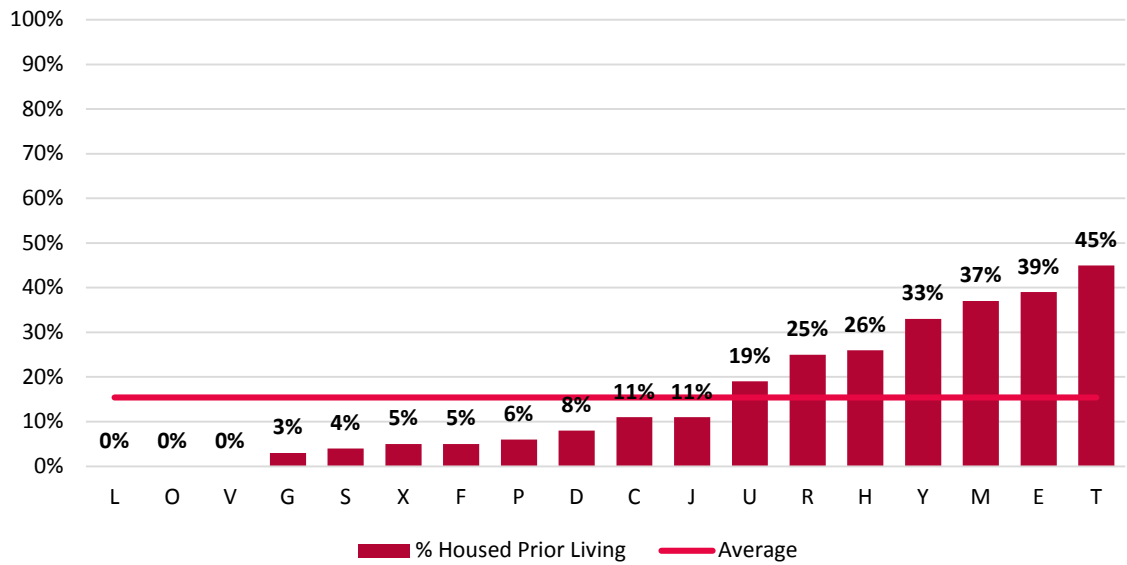
Nashville Transitional Housing: Permanent Housing Exits that Return to Homelessness in Analysis Year
 (July 2014 - June 2015)



Nashville Transitional Housing: Household Entries from Homeless Prior Living in Analysis Year (July 2014 - June 2015)



Nashville Transitional Housing: Household Entries from Non-Homeless Prior Living in Analysis Year (July 2014 - June 2015)

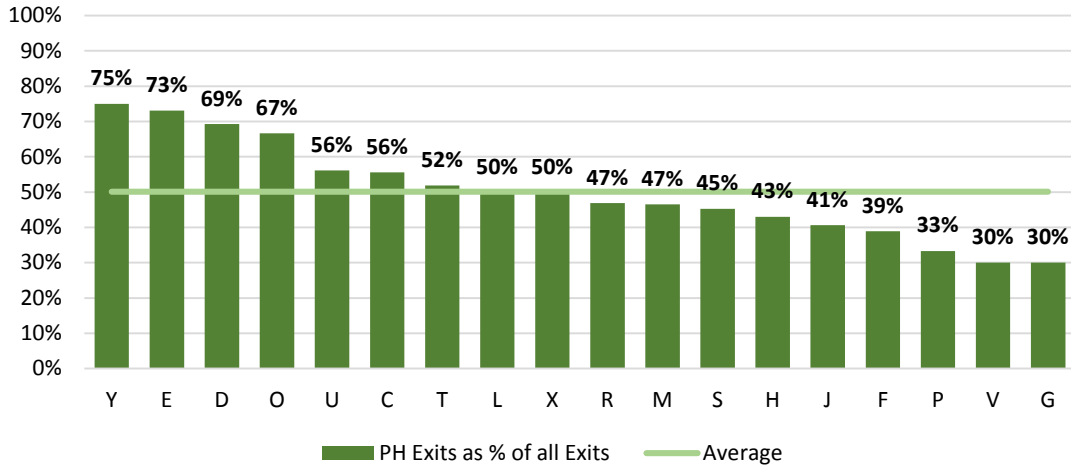


¹ See table "Nashville Transitional Housing: All Household Entries in Analysis Year (July 2014 – June 2015)" for all data on household entries.

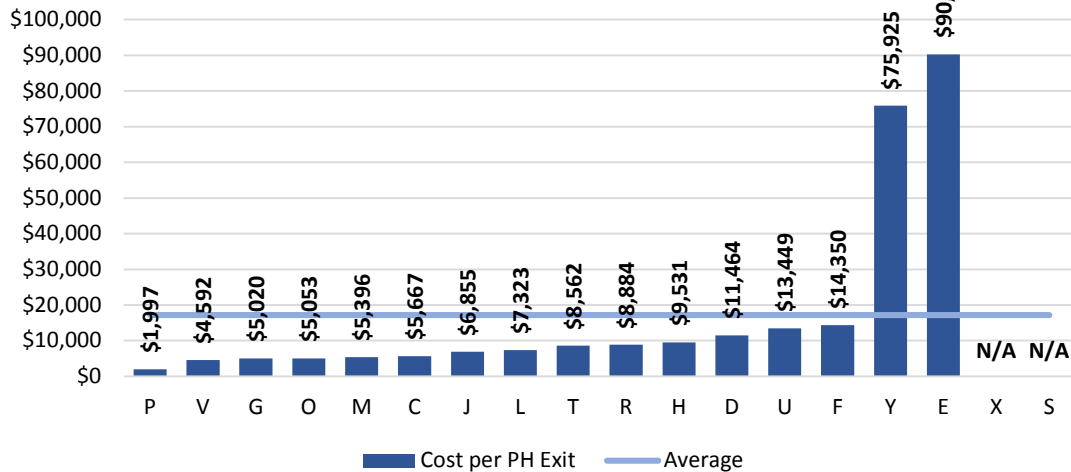
Nashville Transitional Housing: All Household Entries in Analysis Year (July 2014 – June 2015)

Program	% Unsheltered	% ES	% TH	% Housing	% Institutional	% Other	% Unknown	Total
G	34%	38%	15%	3%	0%	0%	7%	97%
U	10%	40%	15%	19%	7%	3%	3%	97%
R	9%	35%	9%	25%	12%	6%	0%	96%
J	22%	20%	29%	11%	8%	7%	1%	98%
E	7%	35%	3%	39%	3%	7%	3%	97%
Y	0%	33%	33%	33%	0%	0%	0%	99%
H	7%	21%	19%	26%	15%	8%	1%	97%
M	9%	15%	0%	37%	32%	5%	0%	98%
D	8%	16%	33%	8%	25%	8%	0%	98%
C	0%	23%	35%	11%	11%	17%	0%	97%
F	5%	16%	22%	5%	44%	0%	5%	97%
V	4%	13%	31%	0%	36%	13%	0%	97%
T	8%	8%	0%	45%	33%	4%	0%	98%
P	3%	6%	0%	6%	75%	3%	6%	99%
L	0%	0%	36%	0%	54%	9%	0%	99%
O	0%	0%	0%	0%	87%	12%	0%	99%
X	0%	0%	0%	5%	0%	0%	94%	99%
S	0%	0%	0%	4%	0%	2%	93%	99%
Average	7%	18%	16%	15%	25%	6%	12%	98%

Nashville Transitional Housing: Rate of Exit to Permanent Housing
in Analysis Year
(July 2014 - June 2015)



Nashville Transitional Housing: Average Cost per Household Exit to
Permanent Housing in Analysis Year
(July 2014 - June 2015)



Here, N/A indicates projects that did not provide budget data.