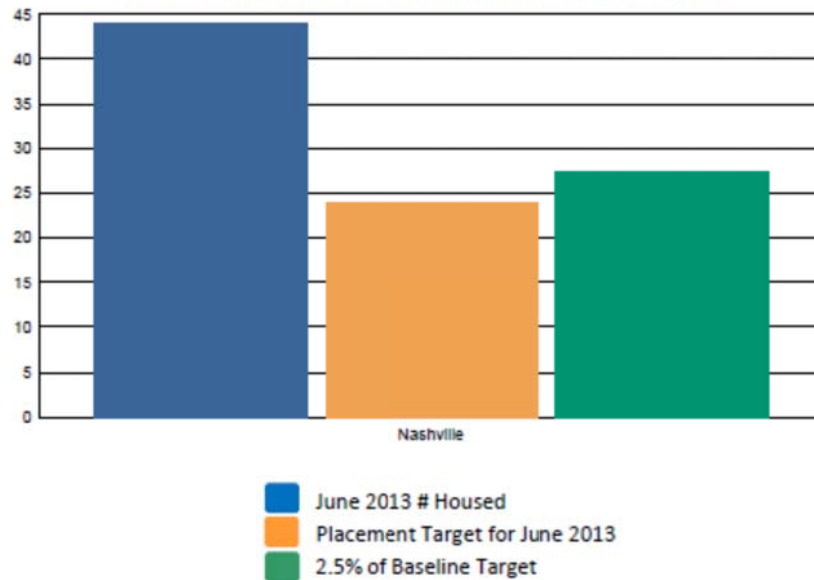


**Nashville**

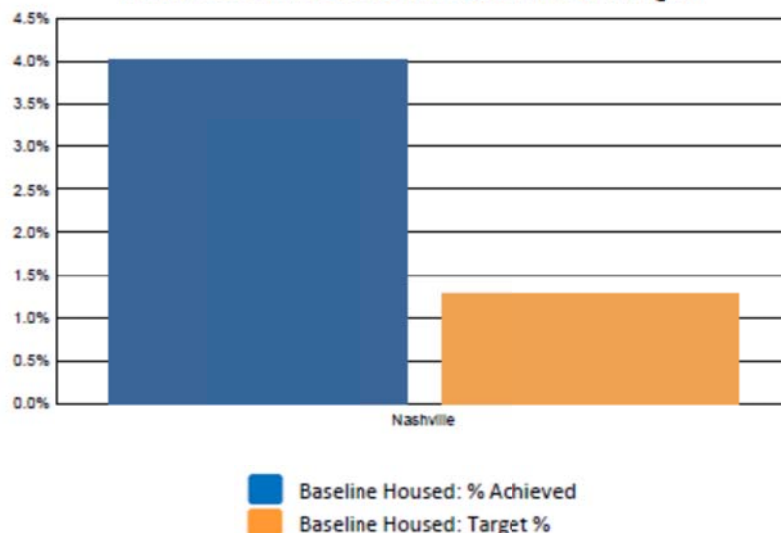
**100,000 Homes Campaign  
June 2013 Housing Placement Report**

<b>June 2013 Housing Placement Target</b>	<b>14</b>
<b>June 2013 Actual Housing Placements</b>	<b>44</b>
<b>Total Housed to Date</b>	<b>257</b>
<b>Total Remaining to be Housed</b>	<b>954</b>
<b>Monthly Number Needing to be Housed to Meet 2.5% Target</b>	<b>27</b>
<b>July 2013 Housing Placement Target</b>	<b>16</b>
<b>August 2013 Housing Placement Target</b>	<b>18</b>
<b>September 2013 Housing Placement Target</b>	<b>24</b>

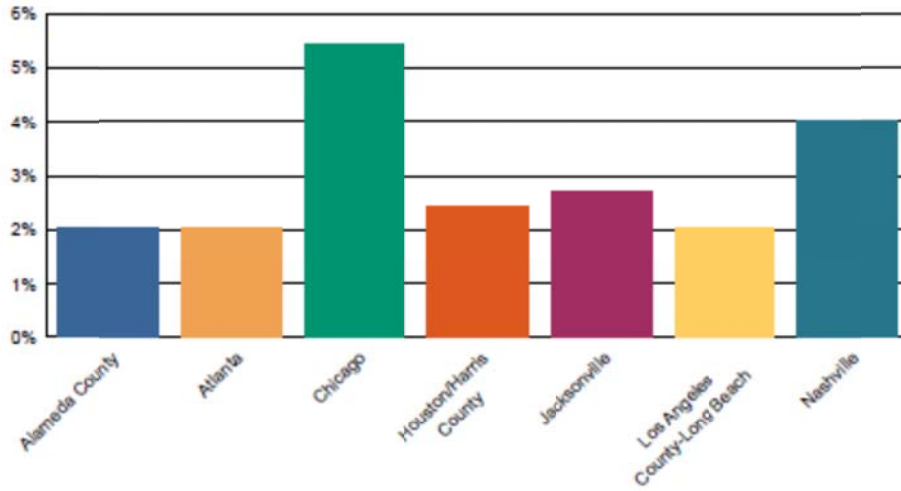
**Housing Placements: Actual vs. Target**



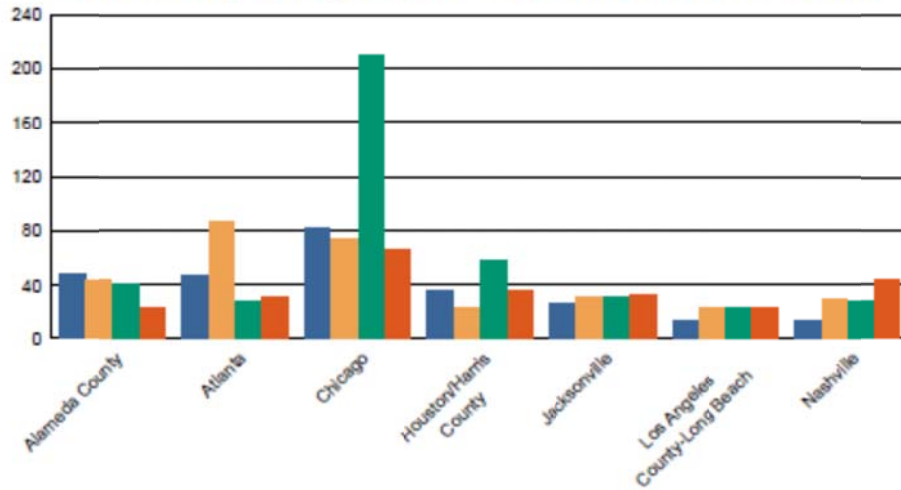
**% of Baseline Housed: Actual vs. Target**



### Community Comparison: % of Baseline Achieved



### Community Comparison: # Housed Past 4 Months



■ March 2013 # Housed      ■ May 2013 # Housed  
■ April 2013 # Housed      ■ June 2013 # Housed